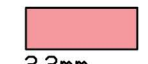


REV	DESCRIPTION	DRAWN BY	DATE
A	NEW RELEASED	PENNY	2006.02.14

maximum components' height:



5.6mm



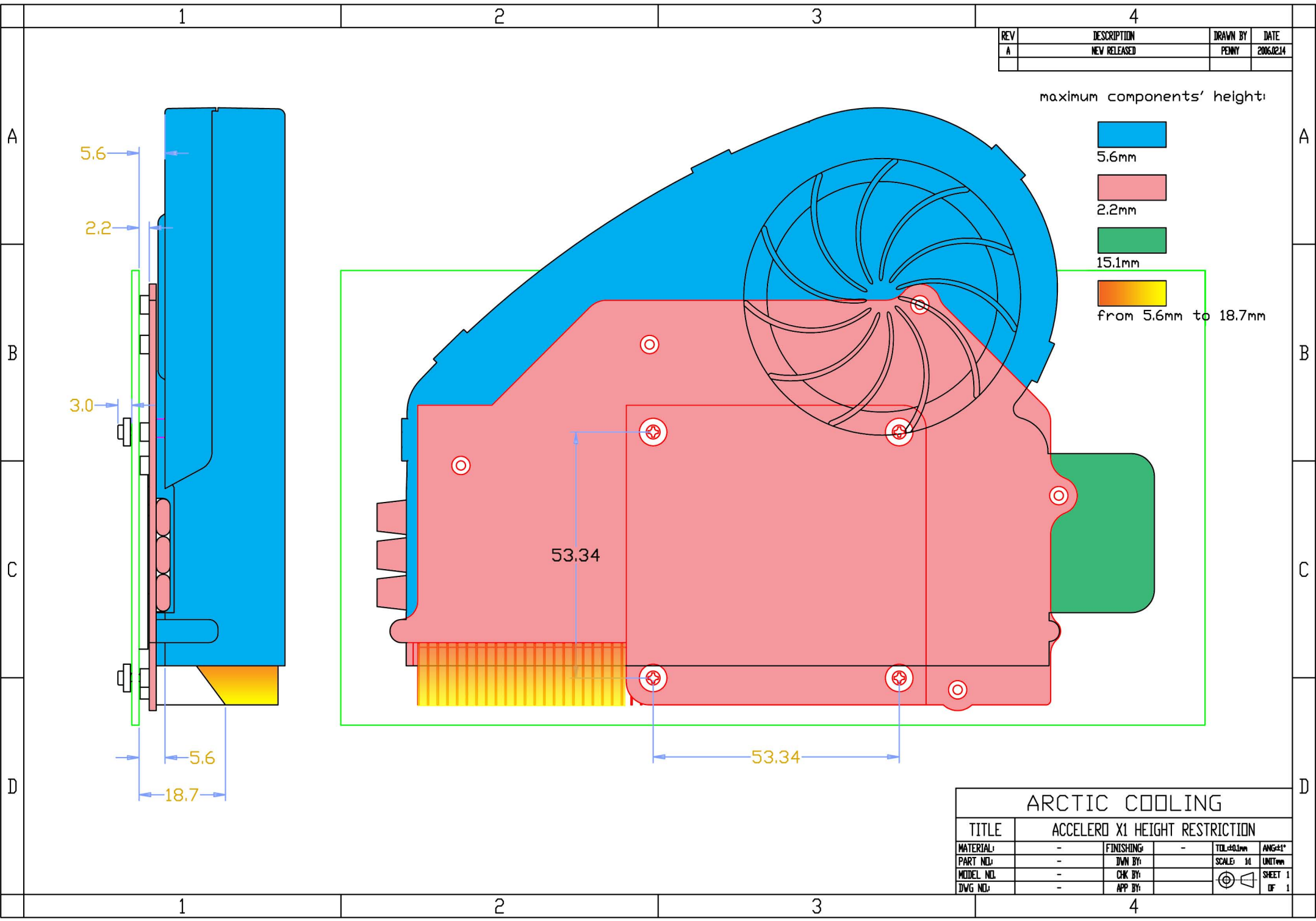
2.2mm



15.1mm



from 5.6mm to 18.7mm



ARCTIC COOLING					
ACCELERO X1 HEIGHT RESTRICTION					
MATERIAL:	-	FINISHING:	-	TOL:±0.1mm	ANG:±1°
PART NO.:	-	DWN BY:	-	SCALE: 1:1	UNIT:mm
MODEL NO.:	-	CHK BY:	-		SHEET 1 OF 1
DWG NO.:	-	APP BY:	-		